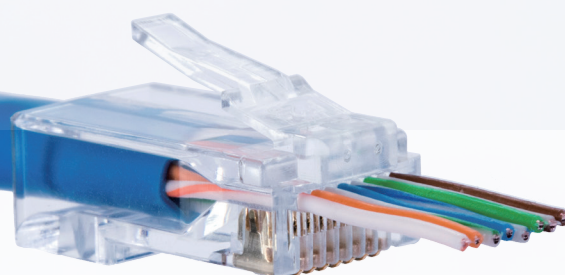
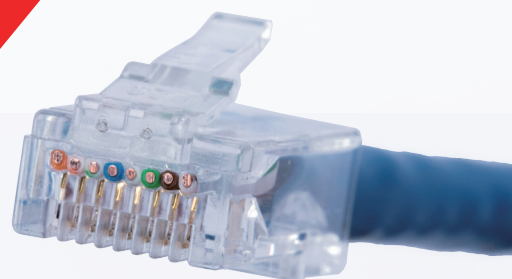
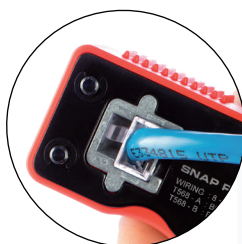


New  
Launch

## SNAP PLUG™ TOOL

- Designed for the use on SNAP PLUG™
- Crimp and Trim at the same time
- Clean flush cut



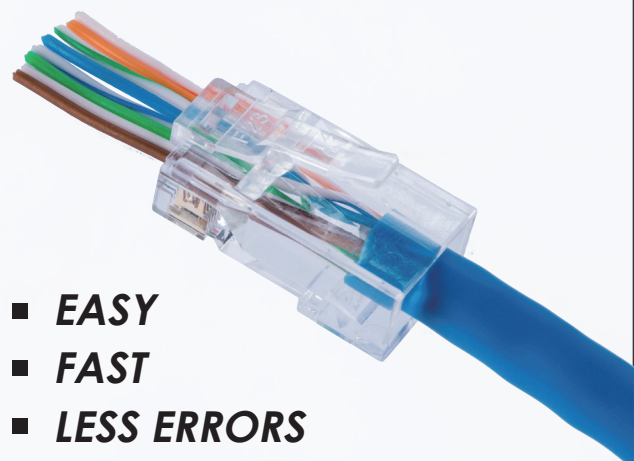
## SNAP PLUG™ CAT 5e / CAT 6

- Enable the conductors to pass through for easy installation
- Verify the wiring order before crimping
- Speed up the termination process

## Why use SNAP PLUG™

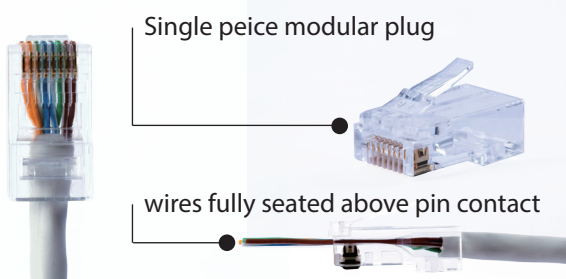
The T3 SNAP PLUG™ and SNAP PLUG Tool is designed to simplify the process of terminating RJ45 modular plug. It is a time-consuming process to assemble traditional RJ45 modular plug, and the most difficult part would be putting the wire into the conductor in correct order. The thicker the conductor is, the more difficult the job is going to be.

The T3 SNAP PLUG™ enables the conductors to pass through the connector itself, making it a lot easier to verify wiring order before crimp, reducing possible errors and waste of materials.

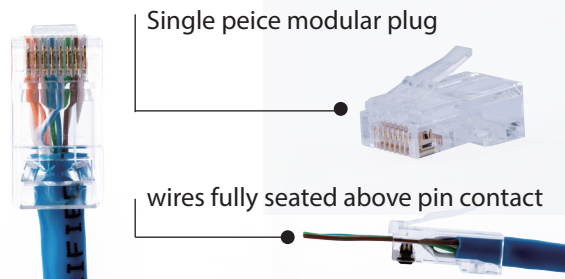


- **EASY**
- **FAST**
- **LESS ERRORS**

### CAT5e UTP 3 prongs Single piece



### CAT6 UTP 3 prongs Single piece

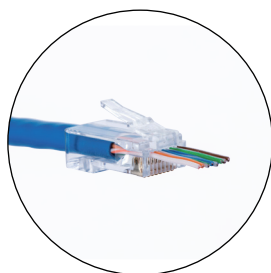


## Why use SNAP PLUG™ TOOL

The T3 SNAP PLUG™ Tool is designed for the SNAP PLUG™ only. Good for professional installation that requires high performance. With ratchet mechanism and the combination of crimper, cutter and stripper, it's a tool that could meet multiple needs for professional use. The parallel crimping force provides even and accurate pressure on each pins for the best termination.



## SNAP PLUG™ Crimping Instructions



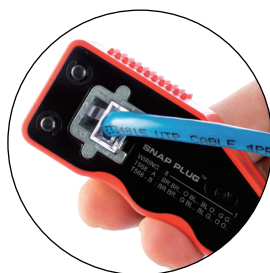
Slide the cable into SNAP PLUG™.

[ STEP 1. ]



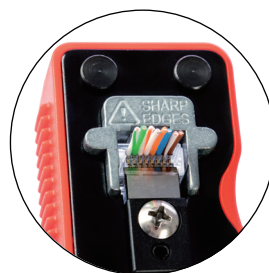
Make sure cable is fully seated.

[ STEP 2. ]



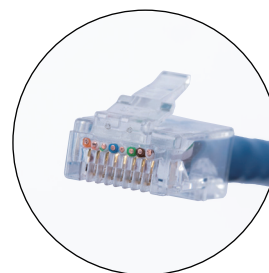
Place assembly into crimping nest.

[ STEP 3. ]



Crimp and trim in one step.

[ STEP 4. ]



Clean finish.

[ STEP 5. ]